

Region 10

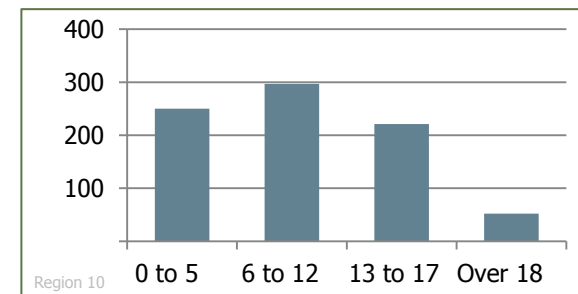


Our Children...

820

Children resided in all households

Number of Children by Age



PSSF Making a Difference

Tina is the product of a home where everything was upside down. Her mother had her first child at age 13, her father had been in prison since she was two months old, and her 16-year-old brother had a three-year-old child. Neither of her parents or her five siblings had graduated from high school. As a teenager, Tina was directionless and spent more days out of school than in school.

Referred by Juvenile Court to a PSSF community outreach center for youth, Tina went through the motions, but nothing really changed. In fact, she later had a child and is now a teen mother herself.

With time, however, her motivation changed from just getting by to finding a future for herself and her baby. She decided to return to the center and ask for help. This time, things were different.

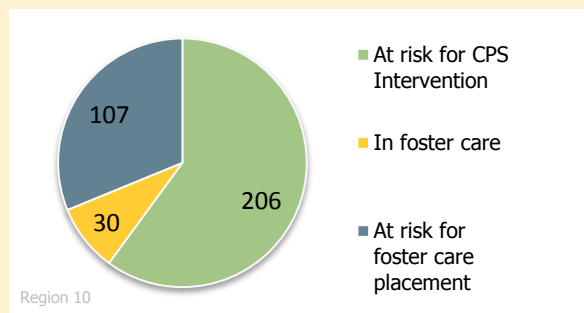
The center coordinated with the local DFCS, helping her get benefits and health department services. Staff members have worked tirelessly with Tina to assist her in caring for her child and obtaining a high school diploma. During three years of high school, Tina had missed 166 days of school and only had 8 of 24 credits needed to graduate. For the first time, with tutoring and support in an alternative school program, Tina is regularly attending school. She is planning a December 2012 graduation and will be the first in her family to obtain a high school diploma. What an achievement!

Our Families...

343

Families residing in Region 10 received a wide array of community-based services

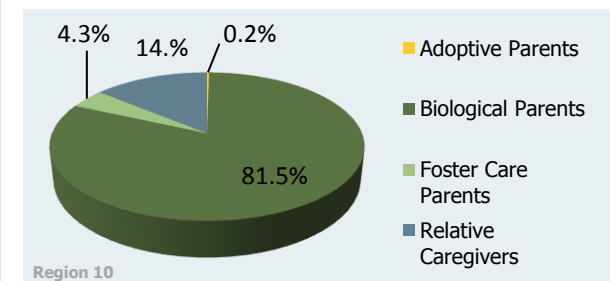
Family involvement with their local child welfare agency at referral:



322 of these families were headed by a biological or adoptive parent, or a relative caregiver

- 28%** two-parent households
- 72%** single-parent households
- 84%** high school education or less
- 44%** employed full- and/or part-time
- 80%** income less than \$20,000

Children being cared for by:



Producing Results...

For the families who completed services in FFY2011:

- 72%** Children remained safely in their homes
- 10%** Children remained in foster or relative care
- 5%** Children were reunified with their families
- 4%** Children achieved permanency through adoption or legal guardianship
- 9%** Youth emancipated from Foster Care
- <1%** Children were referred to DFCS for investigation

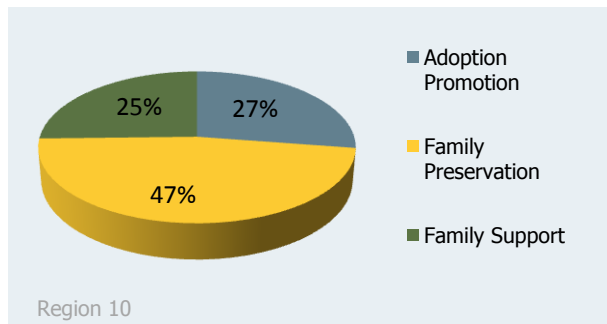
Georgia's Promoting Safe and Stable Families program has steadily built a network of community-based organizations reflecting the state's commitment to ensuring that families have access to the highest quality services and resources needed to help children and youth grow into healthy, contributing members of our society. PSSF is one of the few sources of federal funds directed toward the *prevention* of issues that bring families into the child welfare system.

PSSF Program Areas

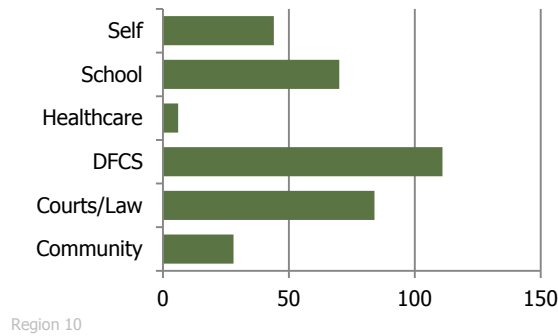
PSSF funds provide services to at-risk families in the areas of:

- **Family Support** to prevent child abuse and neglect among families at risk through the provision of supportive family services
- **Family Preservation** to assure children's safety within the home and preserve intact families in which children have been abused or neglected when the family's needs can be addressed effectively
- **Time-Limited Reunification** to address the needs of families whose children have been placed in foster care so that reunification may occur in a safe and timely manner
- **Adoption Promotion/Post-Permanency Support** to provide foster and adoptive families support services so that they can make a lifelong commitment to their children

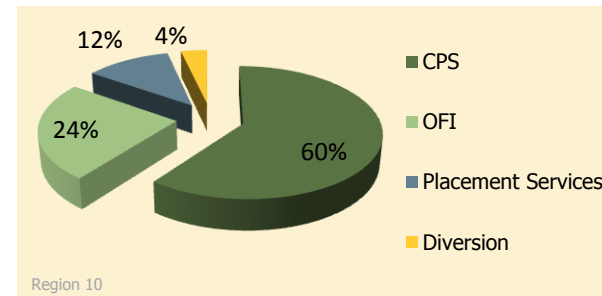
Service Allocation



Source of Community Referrals



DFCS referrals:



Responding to Community Needs

PSSF supports easy access and coordinated service delivery that is child- and family-focused. For more information about the following network providers in Region 10, visit the Family Services Resource Guide at www.pssfnet.com.

Dougherty Family Literacy Council, Inc.

Liberty House of Albany, Inc.

Morningstar Children and Family Services, Inc. (Albany)

Mount Olive Community Outreach Center, Inc.

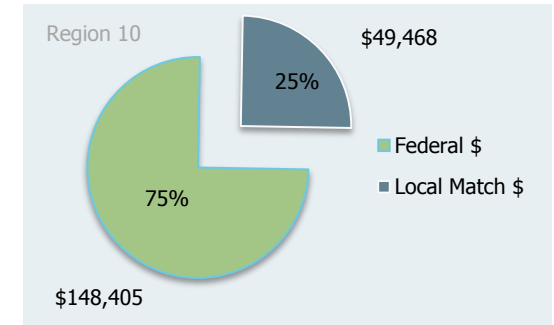
Thomas County CASA, Inc.

Shared Responsibility

PSSF resources have been strategically invested to enhance the capacity of DFCS to identify and meet the needs of families and to expand the array of supportive services available through community-based family service agencies.

Federal allocations are leveraged with the support of matching funds contributed at the local level.

Investment



Service Array

PSSF supports a variety of services for families with children. The following services were made available to families through network providers in Region 10.

- Adoption Promotion
- Center-based Parent Education
- Center-based Support Group
- Child/Family Assessment
- Crisis Intervention
- Effective Discipline/Behavior Management
- Follow-up Services
- Home-based Parent Education
- Information and Referral Services
- Legal Advocacy
- Mentoring and Tutoring
- Parent/Child Activities
- Therapeutic Counseling

