



## Region 14

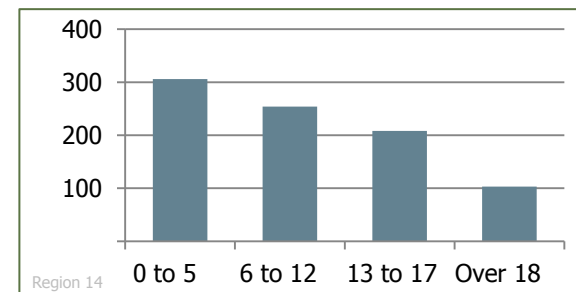


### Our Children...

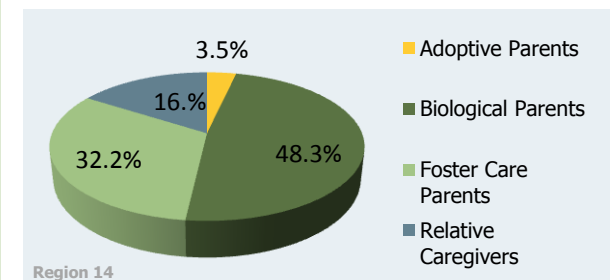
# 874

Children resided in all households

#### Number of Children by Age



#### Children being cared for by:



### PSSF Making a Difference

An incident of child abuse that was bad enough to make the evening news was endured by nine-year-old Toby – whose caregiver had inflicted injuries severe enough to warrant hospitalization. Even more tragic, Toby suffers from both cognitive and physical disabilities.

As a single parent raising two children on a small income, the incident had left Moira in a panic. She needed to find specialized care for her son so she could continue to work and where she could be assured her son would be safe.

Desperate, she requested immediate help and was referred by DFCS to a PSSF program serving children with disabilities. The skilled staff helped Toby transition to the new child care center where his unique needs could be met. With great care and patience, they were able to provide him with the attention and support he needed to feel safe again. What a relief for Moira.

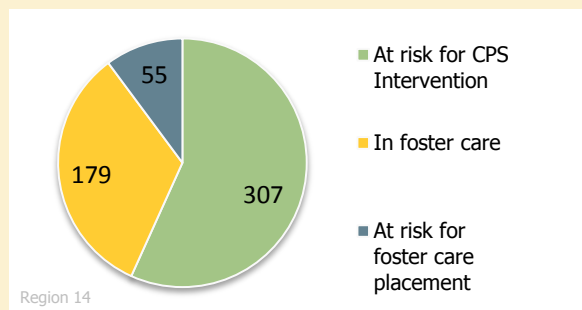
Moira found support at the center too and was connected to additional community-based services for her and the boys. Now, Toby arrives at the center every day with a big smile on his face and engages with his teachers and peers without hesitation – a testament to the power of transformation.

### Our Families...

# 541

Families residing in Region 14 received a wide array of community-based services

*Family involvement with their local child welfare agency at referral:*



**336** of these families were headed by a biological or adoptive parent, or a relative caregiver

- 39%** two-parent households
- 61%** single-parent households
- 57%** high school education or less
- 67%** employed full- and/or part-time
- 59%** income less than \$20,000

### Producing Results...

For the families who completed services in FFY2011:

- 61%** Children remained safely in their homes
- 14%** Children remained in foster or relative care
- 9%** Children were reunified with their families
- 4%** Children achieved permanency through adoption or legal guardianship
- 11%** Youth emancipated from Foster Care
- <1%** Children were referred to DFCS for investigation

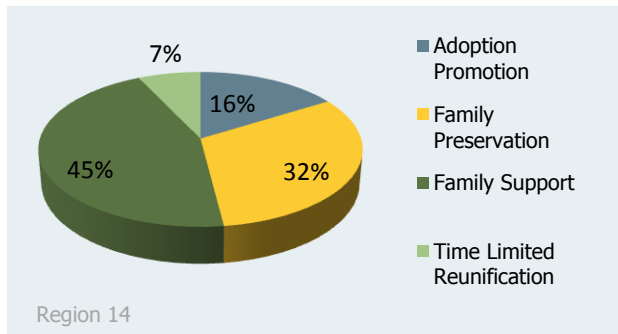
Georgia's Promoting Safe and Stable Families program has steadily built a network of community-based organizations reflecting the state's commitment to ensuring that families have access to the highest quality services and resources needed to help children and youth grow into healthy, contributing members of our society. PSSF is one of the few sources of federal funds directed toward the *prevention* of issues that bring families into the child welfare system.

## PSSF Program Areas

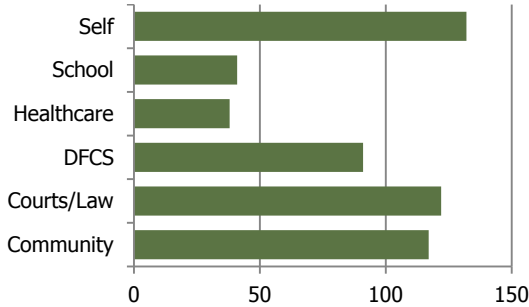
PSSF funds provide services to at-risk families in the areas of:

- **Family Support** to prevent child abuse and neglect among families at risk through the provision of supportive family services
- **Family Preservation** to assure children's safety within the home and preserve intact families in which children have been abused or neglected when the family's needs can be addressed effectively
- **Time-Limited Reunification** to address the needs of families whose children have been placed in foster care so that reunification may occur in a safe and timely manner
- **Adoption Promotion/Post-Permanency Support** to provide foster and adoptive families support services so that they can make a lifelong commitment to their children

### Service Allocation

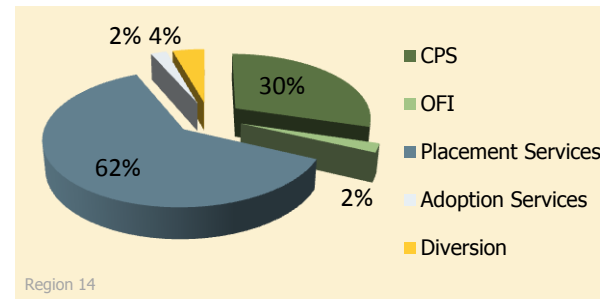


## Source of Community Referrals



Region 14

### DFCS referrals:



Region 14

## Responding to Community Needs

PSSF supports easy access and coordinated service delivery that is child- and family-focused. For more information about the following network providers in Region 14, visit the Family Services Resource Guide at [www.pssfnet.com](http://www.pssfnet.com).

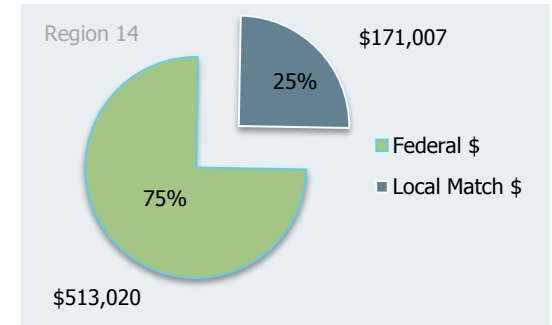
- Caminar Latino, Inc.
- Child Advocate Network, Inc.
- Childkind, Inc.
- CHRIS Kids, Inc.
- Elaine Clark Center, Inc. The
- Families First
- Giving Tree, Inc., The
- Good Shepherd Corporation Atlanta
- Interfaith Outreach Home, Inc.
- Latin American Association, Inc.
- Positive Growth, Inc.

## Shared Responsibility

PSSF resources have been strategically invested to enhance the capacity of DFCS to identify and meet the needs of families and to expand the array of supportive services available through community-based family service agencies.

Federal allocations are leveraged with the support of matching funds contributed at the local level.

### Investment



## Service Array

PSSF supports a variety of services for families with children. The following services were made available to families through network providers in Region 14.

- Adoption Promotion
- Center-based Parent Education
- Center-based Support Group
- Child/Family Assessment
- Childcare
- Crisis Intervention
- Effective Discipline/Behavior Management
- Family Conference/FTM
- Family Life Skills
- Follow-up Services
- Healthcare Screening/Services
- Home-based Parent Education
- Information and Referral Services
- Legal Advocacy
- Mentoring and Tutoring
- Parent/Child Activities
- Respite
- Substance Abuse Recovery Support
- Therapeutic Counseling
- Transportation

